



NOT FOR CONSTRUCTION - FOR DISCUSSION PURPOSES ONLY



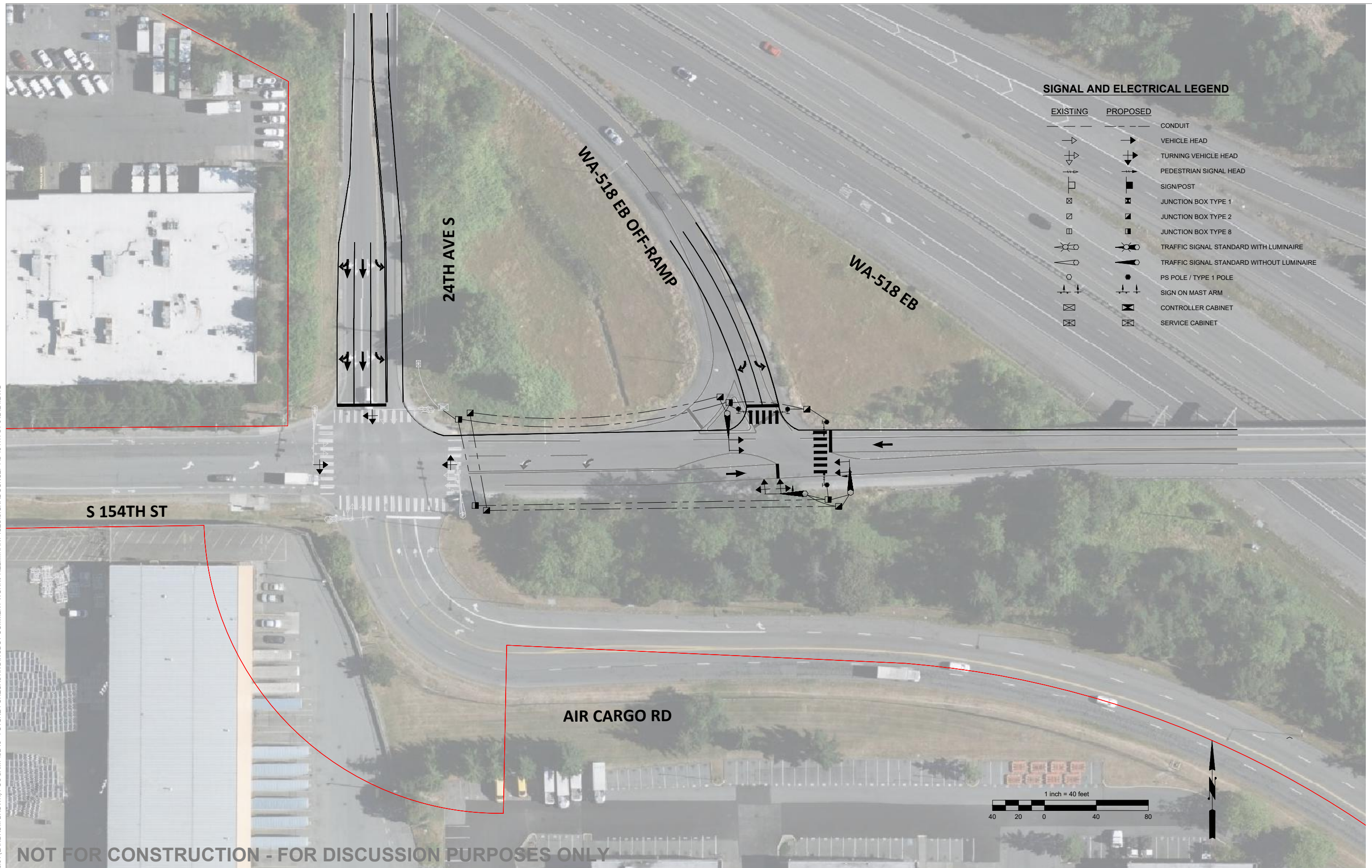
DRAFTED:

DESIGNED:

ROUNDBOUT EVALUATION

SITE 3

01/25/24 | 11:59 AM | RICHARDZ
 H:\P\PROJECTS\20161604 (LANDRUM BROWN) POS SAMP\SD13 - FUTURE FORECASTING\WSDOT COMMENT WORK\PRELIMINARY ICE\SIGNAL CONCEPTS 154TH ST-012424.DWG



SIGNAL AND ELECTRICAL LEGEND

| EXISTING | PROPOSED | |
|----------|----------|---|
| | | CONDUIT |
| | | VEHICLE HEAD |
| | | TURNING VEHICLE HEAD |
| | | PEDESTRIAN SIGNAL HEAD |
| | | SIGN/POST |
| | | JUNCTION BOX TYPE 1 |
| | | JUNCTION BOX TYPE 2 |
| | | JUNCTION BOX TYPE 8 |
| | | TRAFFIC SIGNAL STANDARD WITH LUMINAIRE |
| | | TRAFFIC SIGNAL STANDARD WITHOUT LUMINAIRE |
| | | PS POLE / TYPE 1 POLE |
| | | SIGN ON MAST ARM |
| | | CONTROLLER CABINET |
| | | SERVICE CABINET |

NOT FOR CONSTRUCTION - FOR DISCUSSION PURPOSES ONLY

| NO. | DATE | BY | APPR. | REVISIONS |
|-----|------|----|-------|-----------|
| | | | | |
| | | | | |
| | | | | |

| | |
|-------------|----------|
| R. ZHONG | 12/06/23 |
| DESIGNED BY | DATE |
| R. ZHONG | 12/06/23 |
| DRAWN BY | DATE |
| M. AHMED | 12/11/23 |
| CHECKED BY | DATE |



SAMP Preliminary ICE Signal Concept