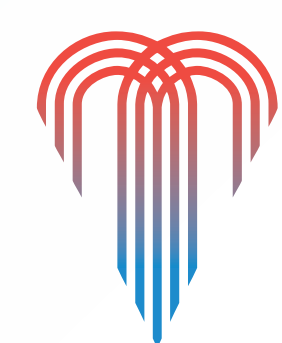


**Welcome to the
Public Scoping Open House
for the
*Proposed Solar Facility Project
Environmental Assessment (EA)*
*Kansas City International Airport***



Purpose of Scoping

- Scoping is conducted early in the Environmental Assessment (EA) process to get the public's input on the most pertinent issues, alternatives to be analyzed, and potential environmental impacts.
- During the scoping comment period, the Kansas City Aviation Department (KCAD) and Federal Aviation Administration (FAA) elicit members of the public to provide written comments to help identify potential alternatives and environmental issues deserving more focused study in the EA.
- Comments can be submitted through any of the following ways:
 - Register at the sign-in table to have your verbal comments recorded.
 - Submit written comments which can be either deposited in the Comment Box or mailed to the indicated address, or email your comments to: KCISolarEA@landrumbrown.com or scott.tener@faa.gov
- All comments must be received by December 21, 2023.

Purpose and Need

- The purpose of the project is to create alternative energy generation, per the KCMO Climate Protection & Resiliency Plan, which then allows revenue on land available within the Airport boundary through leasing areas that are not needed for aircraft movement, safety and other aeronautical uses.
- The need for the project is to contribute to the sustainability goals for the City of Kansas City to provide renewable energy.
 - Providing clean and affordable energy
 - Efficiency in the use of all resources
 - Carbon neutrality
 - Creating a resilient city

Proposed Action

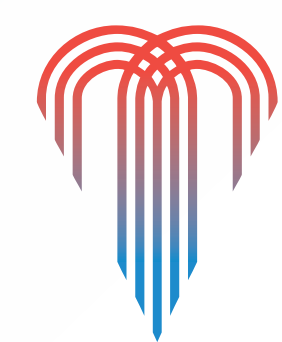
- KCAD is proposing to lease non-aeronautical development area on the west and south side of Airport property for development of a solar facility.
- The project would be built in phases and includes construction of service roads, minor clearing and grading, trenching for electrical transmission power lines for connection to nearby substations, and project fencing.



KCI SOLAR FACILITY EA

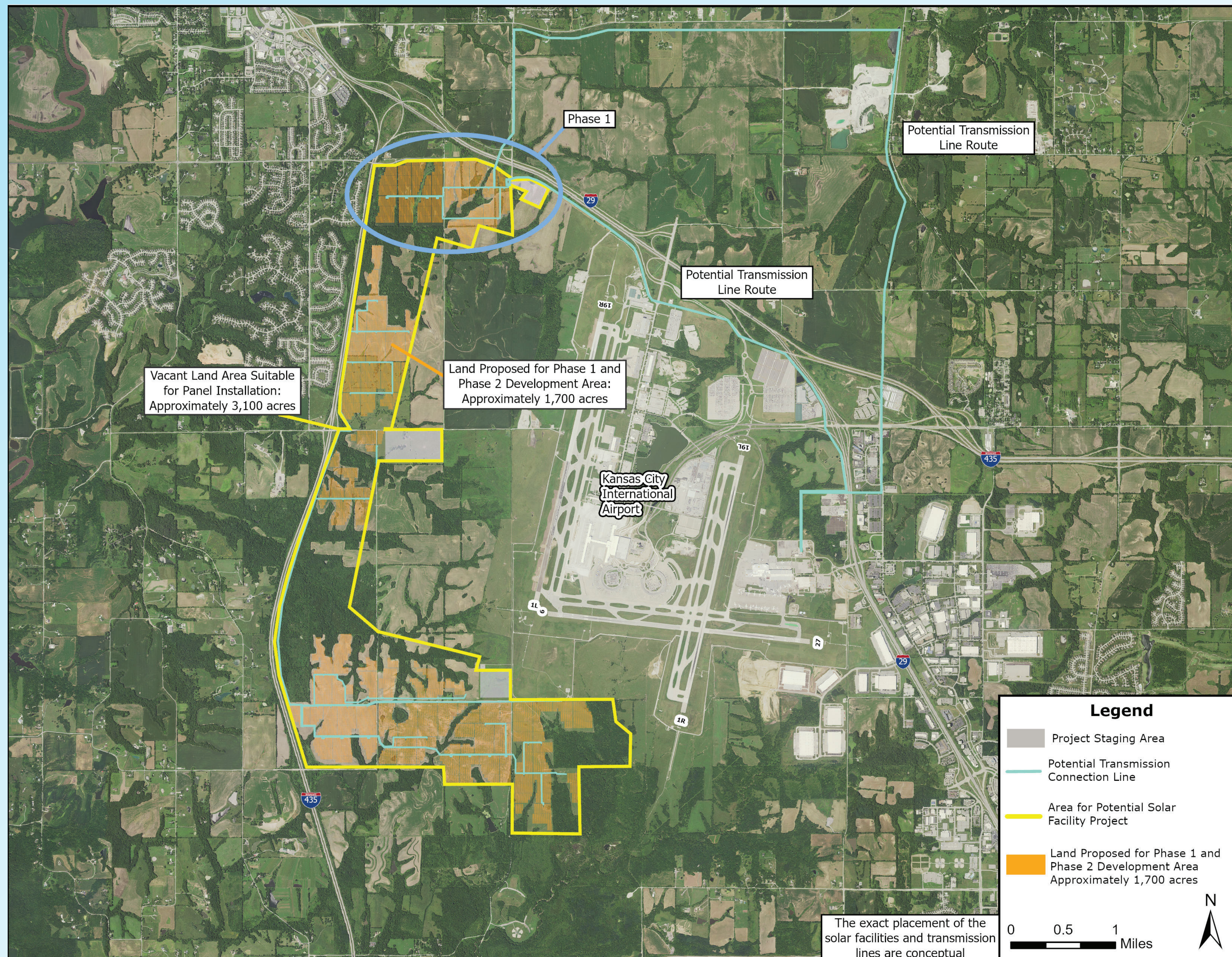


KANSAS CITY
Aviation Dept

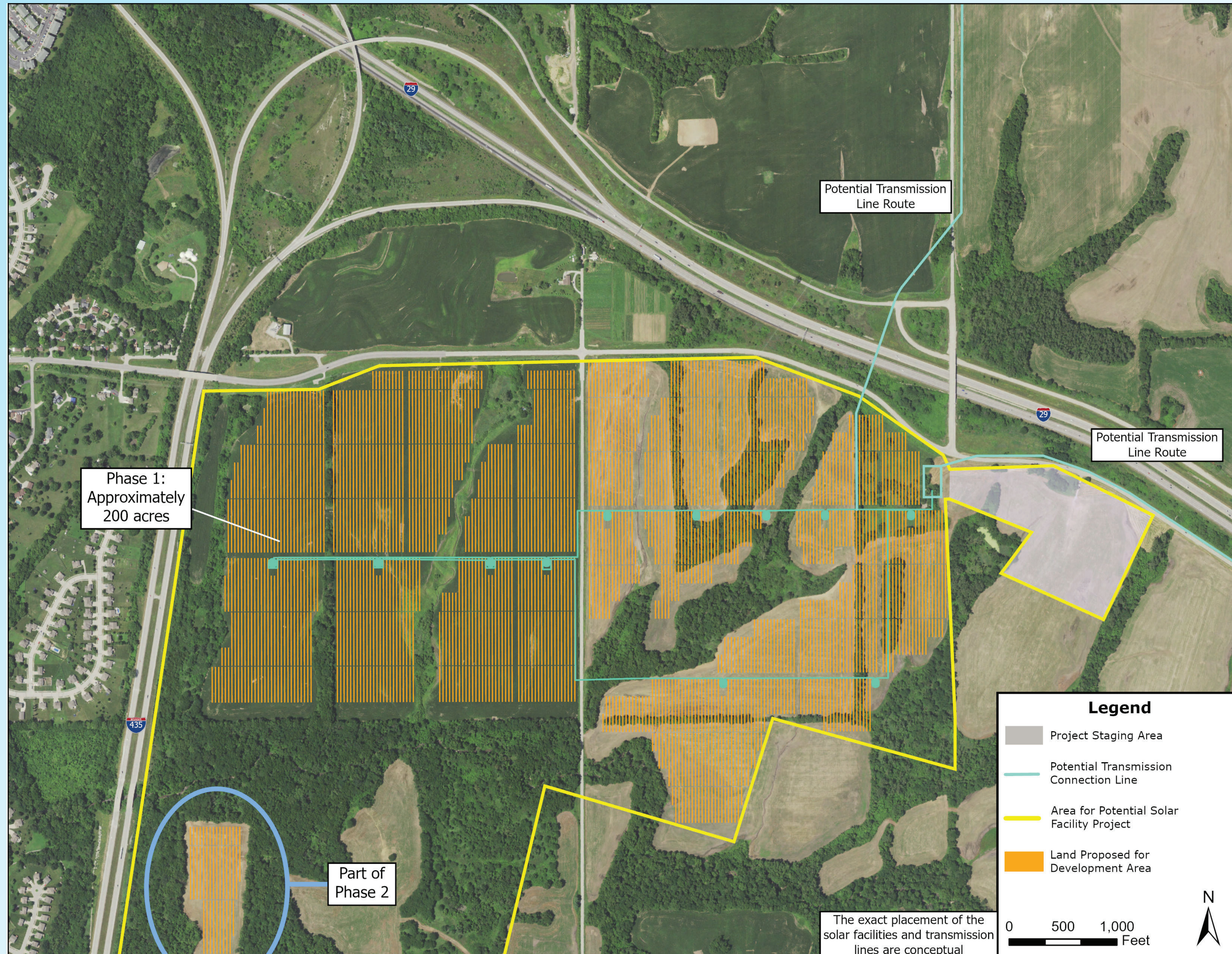


**KANSAS
CITY**

Proposed Action

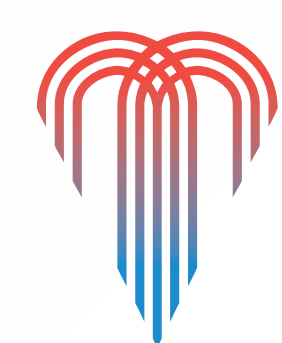


Phase 1

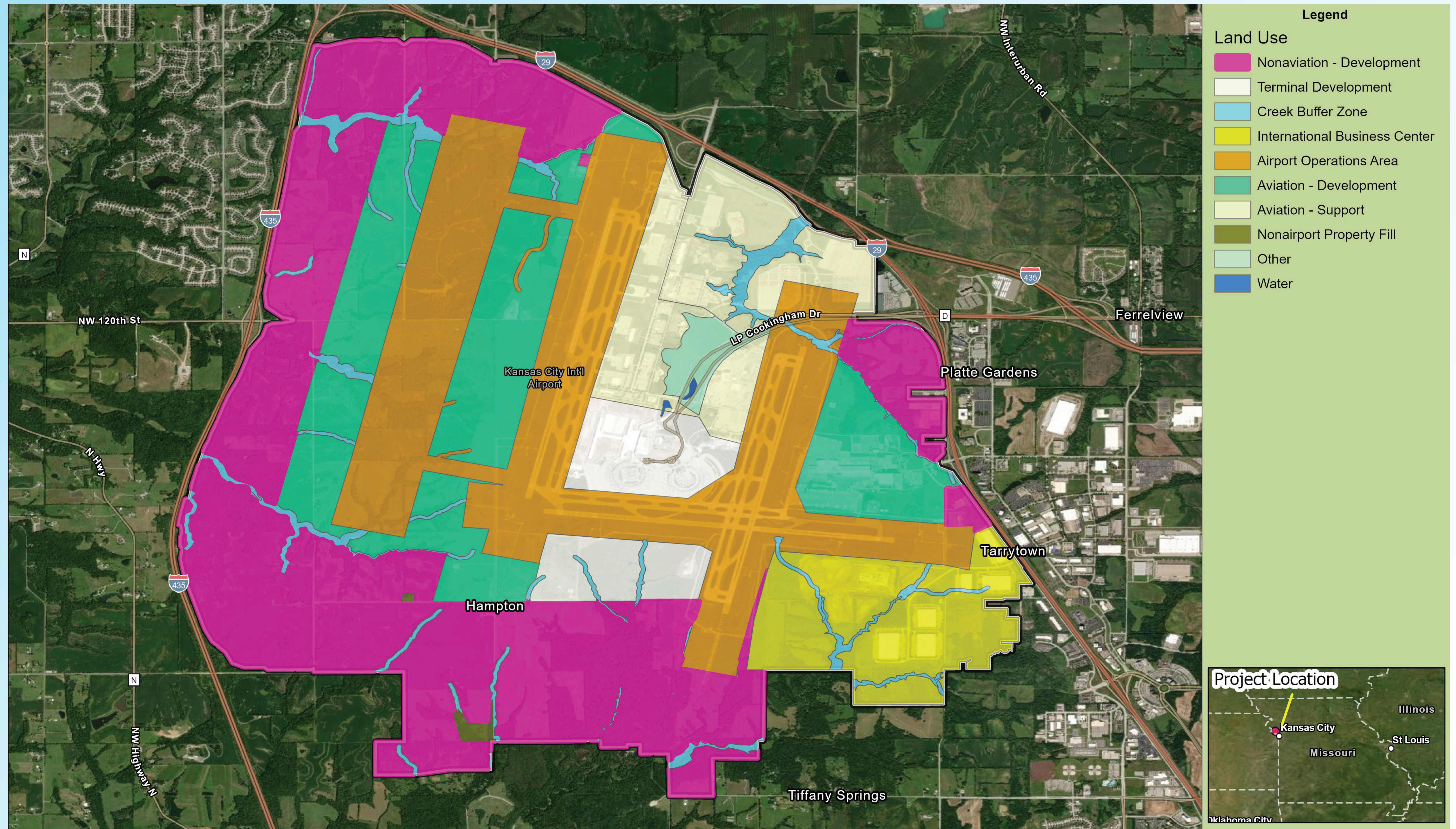


Alternatives

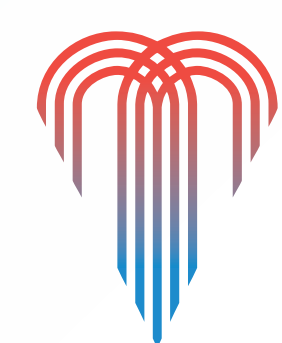
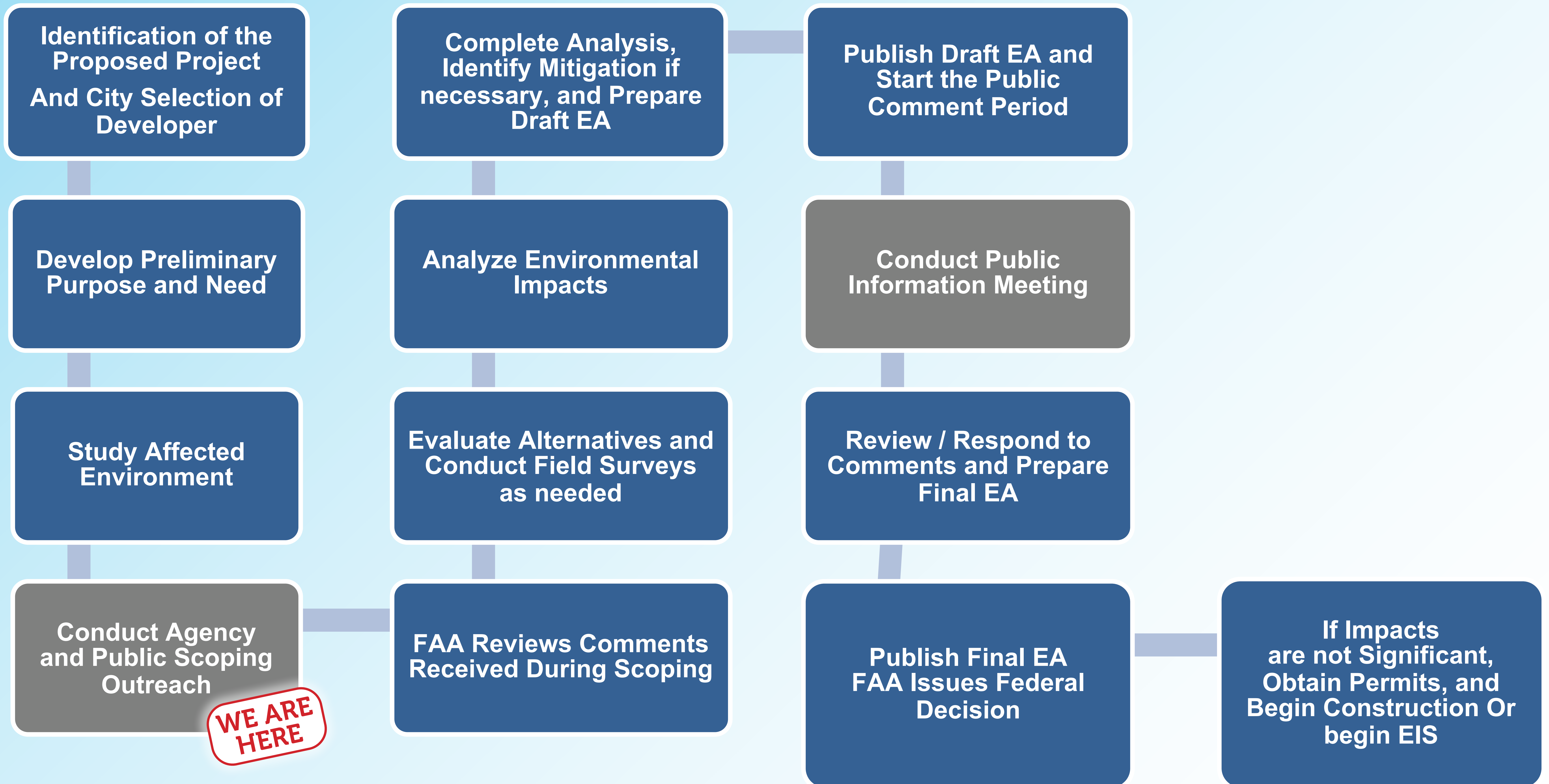
- Alternatives will be reviewed in the EA including:
 - No action: no changes from the existing conditions—must be evaluated as a requirement of the National Environmental Policy Act (NEPA).
- KCAD prepared an Airport Layout Plan (ALP) in 2015 that identified areas for future aviation-related development.
- Only Non-Aviation Development areas will be considered.



Airport Land Use



EA Process



Environmental Resources to be Analyzed

- Air Quality
- Biological Resources (Fish, Wildlife, and Plants)
- Climate
- Department of Transportation Act, Section 4(f)
- Farmlands
- Hazardous Materials, Solid Waste, and Pollution Prevention
- Historical, Architectural, Archeological, and Cultural Resources
- Land Use
- Natural Resources and Energy Supply
- Noise and Noise-Compatible Land Use
- Socioeconomics, Environmental Justice, and Children's Environmental Health and Safety Risks
- Visual Effects (Including Light Emissions)
- Water Resources (Including Wetlands, Floodplains, Surface Waters, Groundwater, and Wild and Scenic Rivers)



THANK YOU for attending the *Public Scoping Open House*

- Comments can be submitted through any of the following ways:
 - Register at the sign-in table to have your verbal comments recorded.
 - Submit written comments which can be either deposited in the Comment Box or mailed to the indicated address, or email your comments to: KCISolarEA@landrumbrown.com or scott.tener@faa.gov
- All comments must be received by December 21, 2023.
- A website will be maintained throughout the EA process to keep the public updated on EA milestones, meeting materials, and documents for public review at <https://www.airportprojects.net/kci-solar-ea/home/>

