



Kansas City International Airport

Proposed Solar Facility Environmental Assessment

**Agency Scoping Meeting
December 7, 2023**



Introduction

- The Kansas City Aviation Department (KCAD) is proposing a Solar Facility on Airport Property.
- KCAD and the Federal Aviation Administration (FAA) are providing this presentation to review the following:
 - Environmental Assessment (EA) process
 - Roles and responsibilities
 - Purpose and need
 - Proposed Action description
 - Potential alternatives
 - Environmental resources to be analyzed
 - How to provide your scoping comments





Background

- KCAD conducted an initial siting and solar feasibility study
 - The study indicated solar facilities at the airport were feasible and could provide enough power annually for up to 35,000 to 70,000 Kansas City households
- KCAD has selected and is in negotiations with developers to design, build, maintain, and operate a solar facility on Airport property
- Because the proposed solar facility would occur on Airport purchased land using FAA Airport Improvement Plan funds, a National Environmental Policy Act (NEPA) review process is required
- The FAA has determined an Environmental Assessment (EA) must be conducted



EA Process

An EA is a concise document used to describe a project's potential environmental impacts.

The FAA identifies the requirements of the EA because it is the lead federal agency.

If the FAA finds a project would not have a significant environmental impacts, then the FAA will issue a Finding of No Significant Impact (FONSI).

If the FAA finds a project would have significant environmental impacts that could not be mitigated below the level of significance, then the FAA may prepare an Environmental Impact Statement (EIS).



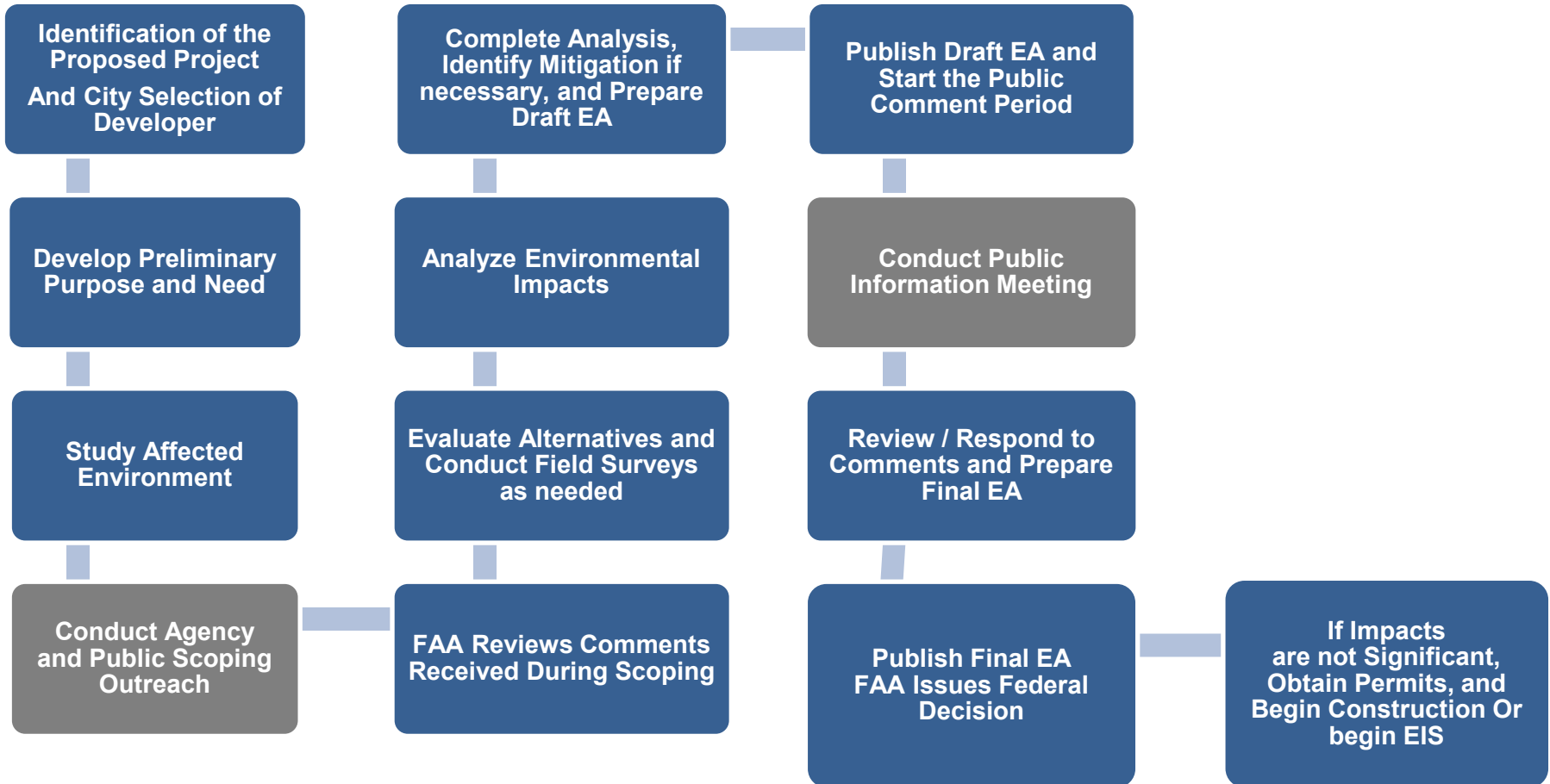


Scoping

- Scoping is conducted early in the EA process to get the public's input on the most pertinent issues, alternatives to be analyzed, and potential environmental impacts.
- During the scoping comment period, KCAD and the FAA request written comments to help identify potential alternatives and environmental issues deserving more focused study in the EA.
- KCAD and FAA will review all comments provided during scoping and will determine if it is necessary to perform additional analyses beyond what is normally conducted in an EA.



EA Process





Roles and Responsibilities

- FAA is the lead federal agency
 - Ensures compliance with National Environmental Policy Act (NEPA) and oversight in the development of the EA
 - Determines whether it may take the federal actions necessary to allow implementation of the project
 - Determines appropriate level of public outreach for the EA
- Kansas City Aviation Department
 - Responsible for the development of the EA content
 - Responsible for obtaining FAA approval to construct the Proposed Project



Roles and Responsibilities

- Regulatory / Resource Agencies
 - Helps ensure compliance with local, state, and federal environmental regulations
 - Helps identify potentially significant environmental impacts
 - Assists in identifying or evaluating potential alternatives
 - Reviews and comments on EA findings
 - Issues environmental permits where applicable
- Public
 - Provides input on the most pertinent issues and potential environmental impacts during scoping
 - Reviews and comments on EA findings



Purpose and Need

- The purpose of the project is to assist KCMO to implement strategies per their Climate Protection & Resiliency Plan and also generate revenue on land available within the Airport boundary through leasing areas that are not needed for aircraft movement and safety and other aeronautical uses.
- The need for the project is to contribute to the City of Kansas City's sustainability goals to provide renewable energy.
 - Providing clean and affordable energy
 - Efficiency in the use of all resources
 - Carbon neutrality
 - Creating a resilient city



Proposed Action

- KCAD is proposing to lease non-aeronautical development area on the west and south side of Airport property for development of a solar facility
- Project includes construction of service roads, minor clearing and grading, trenching for electrical transmission power lines for connection to nearby substations, and project fencing





Proposed Action

Available acreage was selected to avoid:

- Existing land cover to the extent practicable
- Wetlands and watercourses
- FEMA-mapped floodplains
- Potential habitat for federally and state-protected wildlife
- National Register of Historic Places-listed properties
- USDA farmland designation
- Slopes greater than 20%
- Existing infrastructure, e.g., pipelines

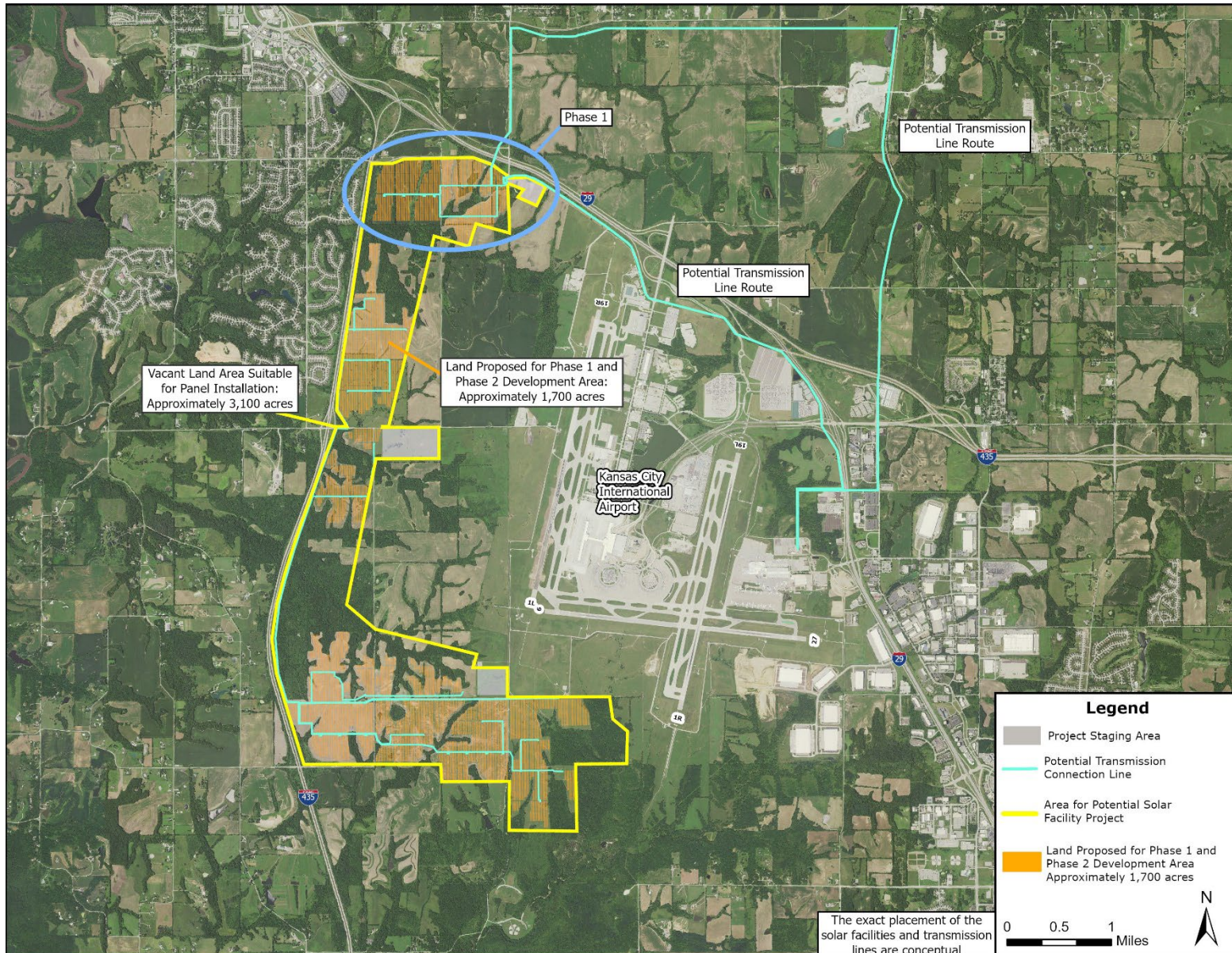
Proposed Action



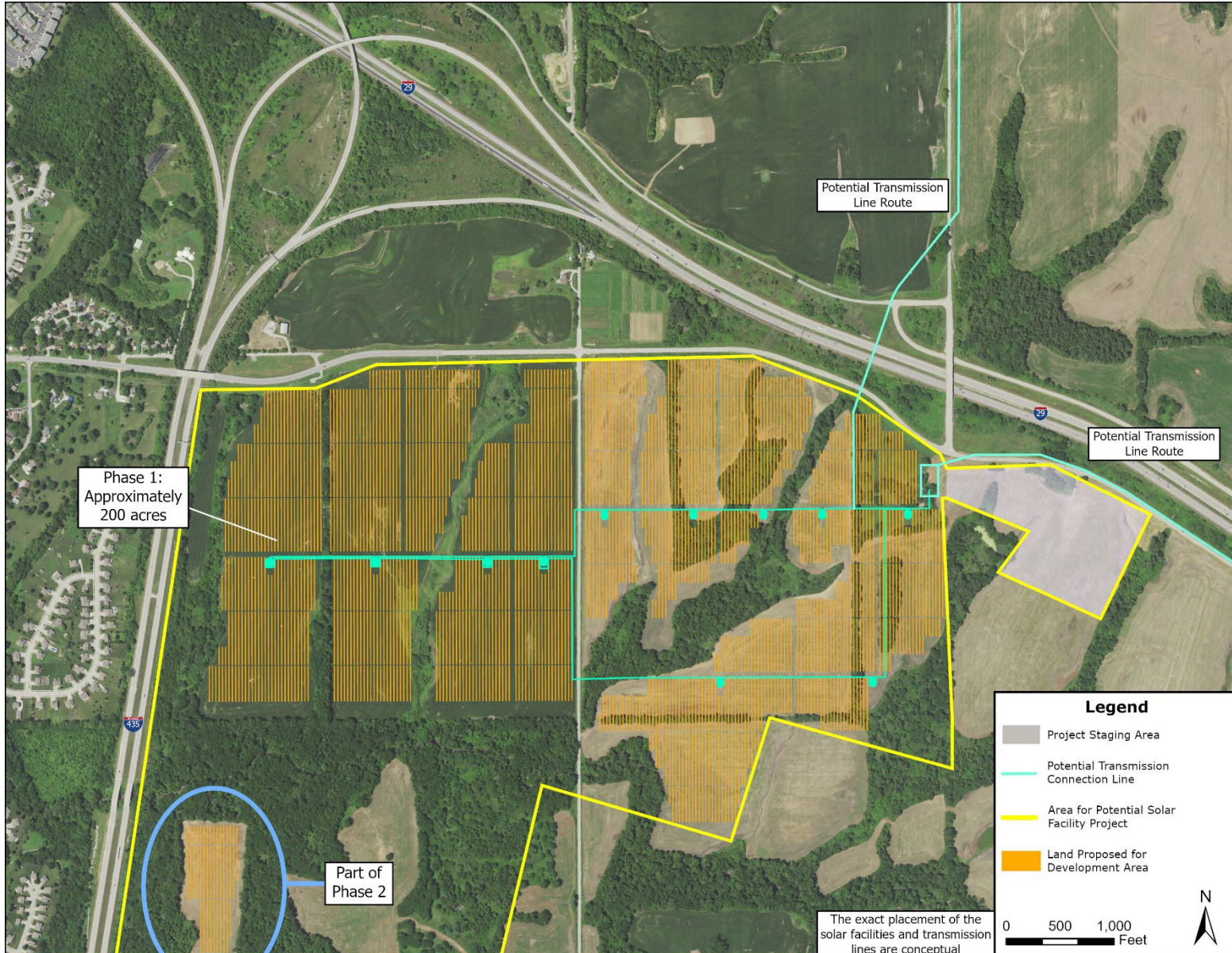
KANSAS CITY



KANSAS CITY
Aviation Dept



Phase 1



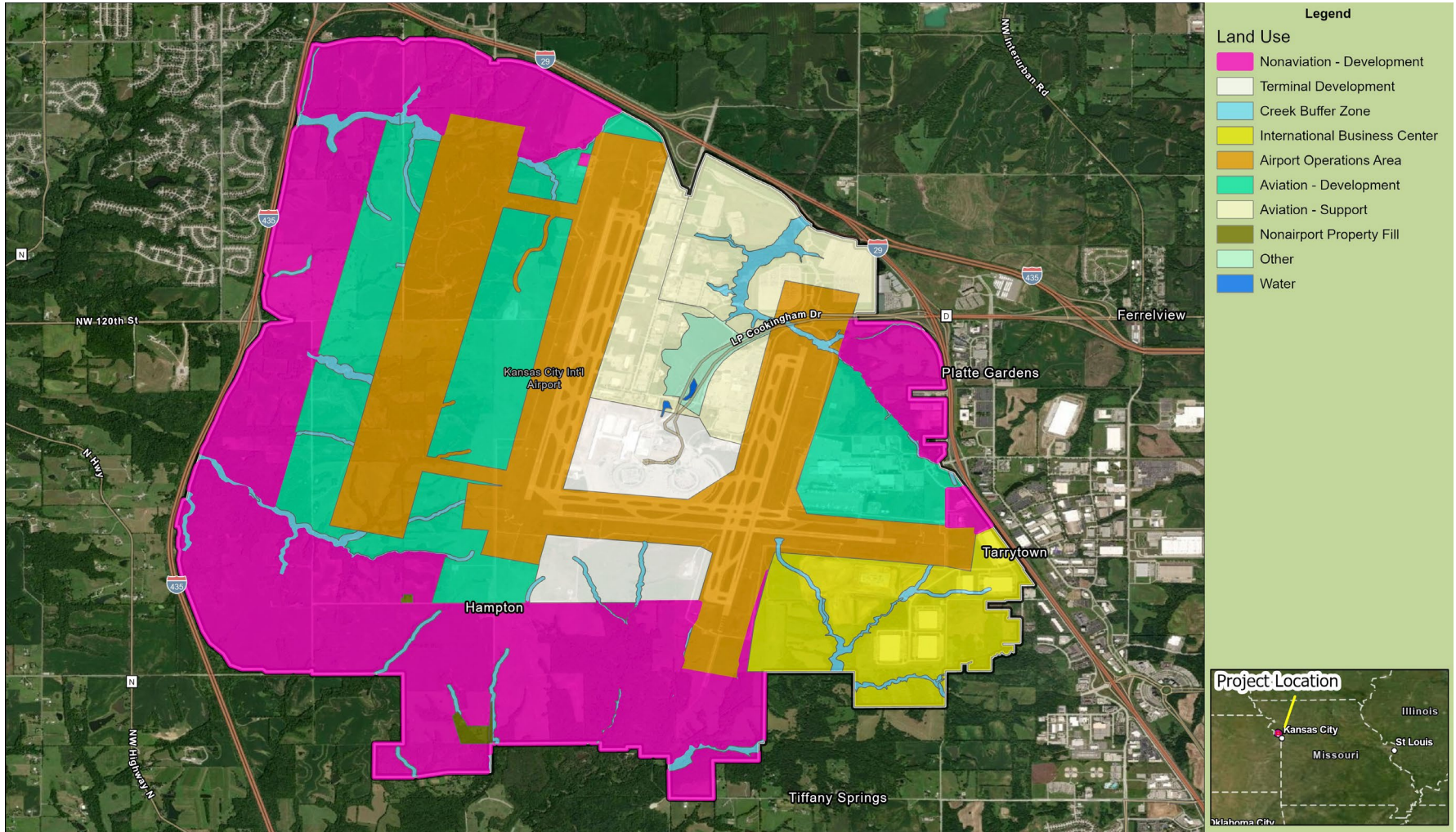


Alternatives

- Alternatives will be reviewed in the EA including:
 - No action (no changes from the existing conditions- must be evaluated as a requirement of NEPA)
- KCAD prepared an Airport Layout Plan (ALP) in 2015 that identified areas for future aviation-related development.
- Only Non-Aviation Development areas will be considered.



ALP Land Use





Environmental Resources to be Analyzed

- Air Quality
- Biological Resources (Fish, Wildlife, and Plants)
- Climate
- Department of Transportation Act, Section 4(f)
- Farmlands
- Hazardous Materials, Solid Waste, and Pollution Prevention
- Historical, Architectural, Archeological, and Cultural Resources
- Land Use
- Natural Resources and Energy Supply
- Noise and Noise-Compatible Land Use
- Socioeconomics, Environmental Justice, and Children's Environmental Health and Safety Risks
- Visual Effects (including light emissions)
- Water Resources (including wetlands, floodplains, surface waters, groundwater, and wild and scenic rivers)



Submit Comments

Comments may be submitted by December 21, 2023:

Mail

Chris Babb Re: KCI Solar EA
Landrum & Brown
4445 Lake Forest Drive, Suite 700
Cincinnati, OH 45242

Email

KClSolarEA@landrumbrown.com

Or Directly to the FAA

Scott Tener Re: KCI Solar EA
901 Locust Street, Room 364
Kansas City, MO 64106-2325

Email

Scott.Tener@faa.gov



For Additional Information

- A website will be maintained throughout the EA process to keep the public updated on EA milestones, meeting materials, and documents for public review
 - (<https://www.airportprojects.net/kcisolar-ea/>)
- If special accommodations, such as audio or visual assistance, are required to view this information a phone number has been set up for the public to provide assistance
 - 816-648-1542