

Sponsor's Certification
 The Noise Exposure Maps and accompanying documentation for the Noise Exposure Map for the John Glenn Columbus International Airport submitted in accordance with 14 CFR Part 150 with the best available information, are hereby certified as true and complete to the best of my knowledge and belief. I verify that the data used to develop this Existing (2024) Noise Exposure Map is representative of existing conditions. Interested persons have been afforded adequate opportunity to submit their views, data, and comments concerning the correctness and adequacy of the draft Noise Exposure Maps and descriptions of forecast aircraft operations.

Date of Signature: _____
 Joseph R. Nardone
 President & CEO
 Columbus Regional Airport Authority

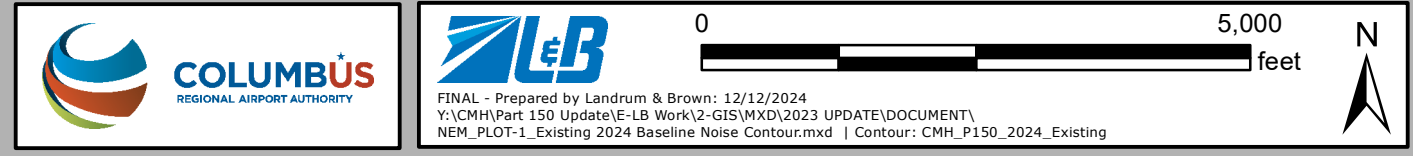
DRAFT

	60-65 DNL	65-70 DNL	70-75 DNL	75+ DNL
Housing Units	1,762	0	0	0
Population	3,752	0	0	0
Noise-Sensitive Facilities	15	0	0	0
Schools / Educational Facilities	5	0	0	0
Churches / Places of Worship	10	0	0	0
Libraries	0	0	0	0
Hospitals	0	0	0	0
Nursing Homes	0	0	0	0

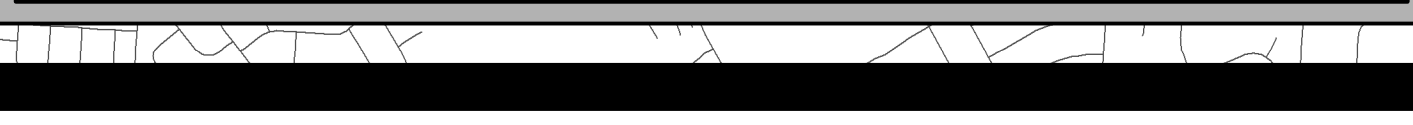
Note: In accordance with 14 CFR Part 150 Land Use Compatibility Guidelines, all land uses are compatible with noise levels below 65 DNL. The 60 DNL noise contour is shown for informational purposes only.

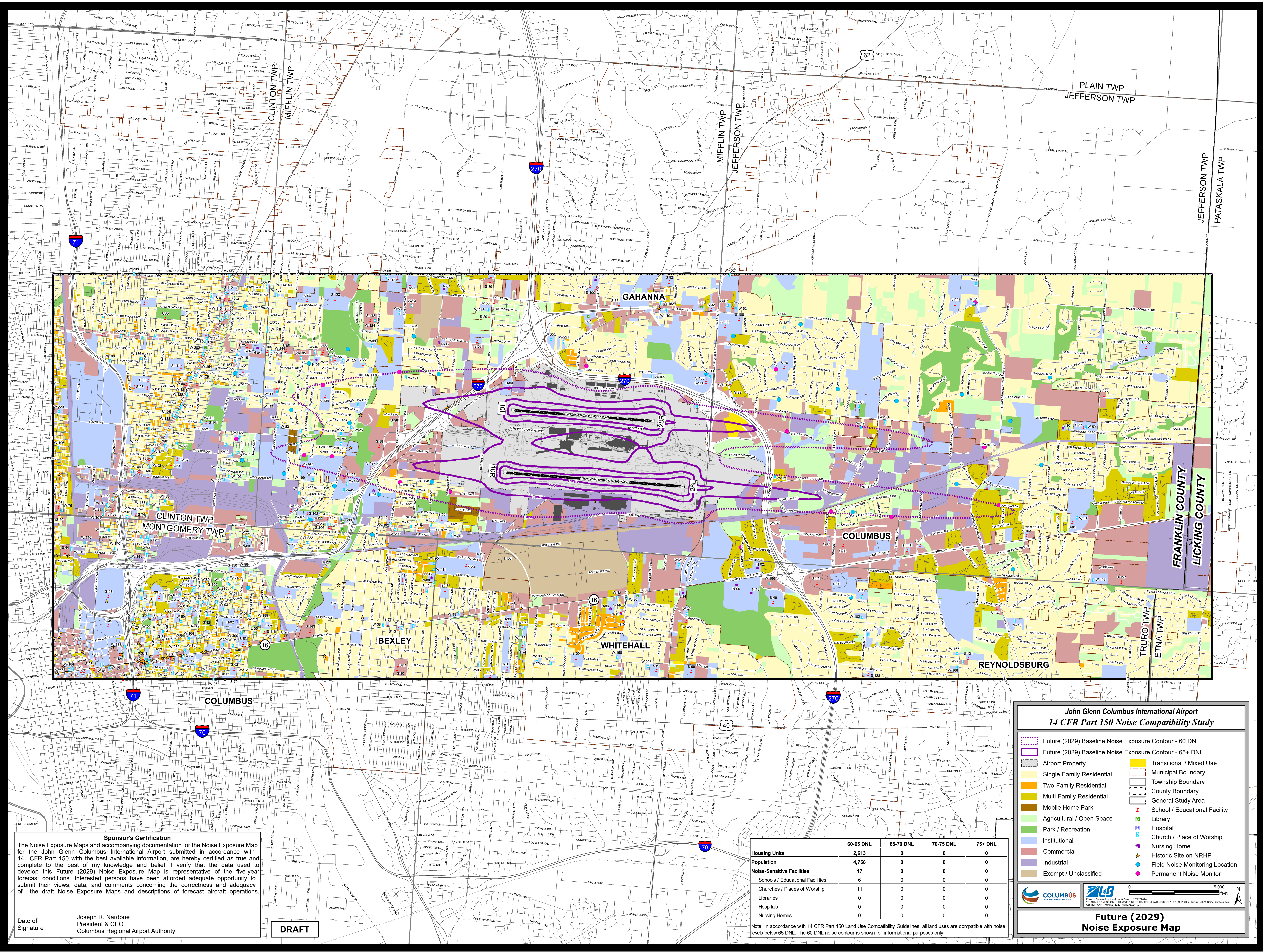
**John Glenn Columbus International Airport
 14 CFR Part 150 Noise Compatibility Study**

- Existing (2024) Baseline Noise Exposure Contour - 60 DNL
- Existing (2024) Baseline Noise Exposure Contour - 65+ DNL
- Airport Property
- Single-Family Residential
- Two-Family Residential
- Multi-Family Residential
- Mobile Home Park
- Agricultural / Open Space
- Park / Recreation
- Institutional
- Commercial
- Industrial
- Exempt / Unclassified
- Municipal Boundary
- Township Boundary
- County Boundary
- General Study Area
- School / Educational Facility
- Library
- Hospital
- Church / Place of Worship
- Nursing Home
- Historic Site on NRHP
- Field Noise Monitoring Location
- Permanent Noise Monitor



**Existing (2024)
 Noise Exposure Map**





Sponsor's Certification
 The Noise Exposure Maps and accompanying documentation for the Noise Exposure Map for the John Glenn Columbus International Airport submitted in accordance with 14 CFR Part 150 with the best available information, are hereby certified as true and complete to the best of my knowledge and belief. I verify that the data used to develop this Future (2029) Noise Exposure Map is representative of the five-year forecast conditions. Interested persons have been afforded adequate opportunity to submit their views, data, and comments concerning the correctness and adequacy of the draft Noise Exposure Maps and descriptions of forecast aircraft operations.

Date of Signature: Joseph R. Nardone
 President & CEO
 Columbus Regional Airport Authority

DRAFT

	60-65 DNL	65-70 DNL	70-75 DNL	75+ DNL
Housing Units	2,613	0	0	0
Population	4,756	0	0	0
Noise-Sensitive Facilities	17	0	0	0
Schools / Educational Facilities	6	0	0	0
Churches / Places of Worship	11	0	0	0
Libraries	0	0	0	0
Hospitals	0	0	0	0
Nursing Homes	0	0	0	0

Note: In accordance with 14 CFR Part 150 Land Use Compatibility Guidelines, all land uses are compatible with noise levels below 65 DNL. The 60 DNL noise contour is shown for informational purposes only.

**John Glenn Columbus International Airport
 14 CFR Part 150 Noise Compatibility Study**

Future (2029) Baseline Noise Exposure Contour - 60 DNL
 Future (2029) Baseline Noise Exposure Contour - 65+ DNL
 Airport Property
 Single-Family Residential
 Two-Family Residential
 Multi-Family Residential
 Mobile Home Park
 Agricultural / Open Space
 Park / Recreation
 Institutional
 Commercial
 Industrial
 Exempt / Unclassified

Transitional / Mixed Use
 Municipal Boundary
 Township Boundary
 County Boundary
 General Study Area
 School / Educational Facility
 Library
 Hospital
 Church / Place of Worship
 Nursing Home
 Historic Site on NRHP
 Field Noise Monitoring Location
 Permanent Noise Monitor

COLUMBUS REGIONAL AIRPORT AUTHORITY
 Future (2029) Noise Exposure Map
 Scale: 0 to 5,000 feet
 Date: 10/20/2023